



**Description:** Modular direct emission LED system, composed of an extruded aluminum profile, which can be used both individually and in a continuous row to create cuts of light without interruptions. Thanks to the complete range of accessories, it constitutes a versatile and easy-to-install system: available in the ceiling-mounted versions with ABS spacers h.10mm supplied, suspension and wall fixing using accessories to be ordered separately.

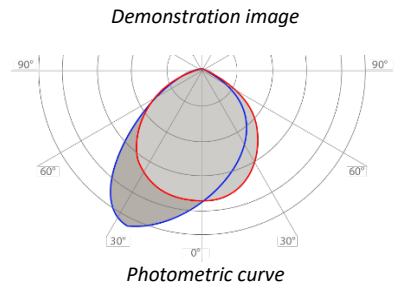
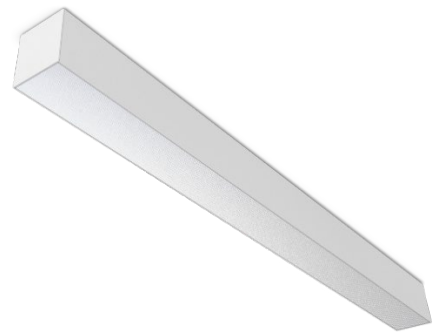
**Body:** 6060 T5 alloy aluminum profile, painted in "dry" white color with thermosetting epoxy powders at 180 ° C, after degreasing, phosphating and washing treatment. Other colors according to the RAL range are available on request. Supplied without heads and installation accessories (to be ordered separately).

**Optical group:** PMO AS louvre in micropismatic polycarbonate, UV protected. Asymmetric glossy white flow recuperator. Glow-wire test 850 ° C. Protection degree IP42.

**Wiring:** power supply 220-240V 50 / 60Hz with rigid cable, sect. 0.50 mm<sup>2</sup> and PVC-HT sheath resistant to 90 ° C according to CEI 20-20 standards. Terminal block with maximum allowed cable section 2.5 mm<sup>2</sup>. Insulation class I. Suitable for installation on normally flammable surfaces.

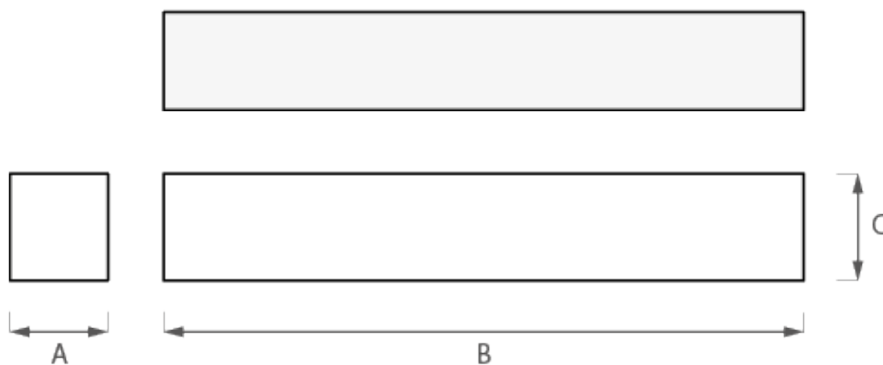
- LED version with electronic driver with fixed output (ON / OFF), included.
  - DALI LED version with standard DALI digital dimmable electronic driver, included.
- Versions with emergency kit (1/3 hours of autonomy) are available on request.

**Luminous source:** High efficiency LEDs arranged on rigid modules, color rendering CRI > 80 (CRI > 90 available on request), color temperature 3000K and 4000K (selected LED diode 3 MacAdam ellipses in order to guarantee uniform chromaticity). LED TUNABLE WHITE 2700-6500K versions available on request. Life of the sources in normal conditions: over 50,000 hours L80 / B10 at Ta = 25 ° C.



**Regulations:** appliance complies with the following standards:

- |                 |                  |                           |
|-----------------|------------------|---------------------------|
| • EN 61547      | • IEC/TR 62471-2 | • EN 60598-2-2            |
| • EN 55015      | • EN 60061-1     | • EN 62471 (risk class 0) |
| • EN 61000-3-2  | • EN 62031       | • EN 62560                |
| • EN 61000-3-3  | • EN 62493       | • EN 60968                |
| • EN 61347-1    | • EN 60598-1     | • CEI 76-10               |
| • EN 61347-2-13 | • EN 60598-2-1   | • EN 60529                |





**Linear modules**

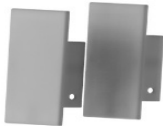
Power [W]	Color temperature [K]	CRI	Effective flux [lm] *	Efficiency [lm/W]	Energetic class	Dimensions [mm]			Code / Wiring	
						A*	B	C	LED	LED DALI
13	3000	>80	1118	86	A++	561	86	94	760100601	760100603
13	4000	>80	1222	94	A++	561	86	94	760100602	760100604
26	3000	>80	2236	86	A++	1121	86	94	760100418	760100606
26	4000	>80	24444	94	A++	1121	86	94	760100605	760100607
39	3000	>80	3354	86	A++	1681	86	94	760100608	760100609
39	4000	>80	3666	94	A++	1681	86	94	760100495	760100500
52	3000	>80	4472	86	A++	2241	86	94	760100610	760100611
52	4000	>80	4888	94	A++	2241	86	94	760100540	760100612
65	3000	>80	5590	86	A++	2801	86	94	760100613	760100614
65	4000	>80	6110	94	A++	2801	86	94	760100541	760100615

\* Dimensions excluding the heads (3mm thick each) at the beginning and end of the row.

\*\* Actual flow may have a tolerance of ± 10%

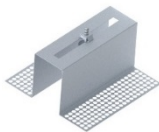
\*\*\* The product is supplied as standard without end caps, to be ordered separately.

**INSTALLATION ACCESSORIES**



**COD. TC760004**

End caps in aluminum painted in DRY WHITE color.  
2-piece kit.



**COD. KFC760100**

Bracket for installation on plasterboard.  
Material galvanized steel sheet.  
Including fixing screws.  
3-piece kit.



**COD. KPR760004**

90 ° wall fixing bracket.  
Material galvanized steel sheet painted DRY WHITE.  
Including fixing screws.  
2-piece kit.



**COD. KP4760004**

45 ° wall fixing bracket.  
Material galvanized steel sheet painted DRY WHITE.  
Including fixing screws.  
2-piece kit.



**COD. KFS760000**

Union bracket for installation in a continuous line, made of galvanized steel.  
Fixing screws supplied.



**COD. KS013**

Suspension cable L = 2000mm  
To be provided 2 pcs for each lamp.

COD. **CVT~~x~~X075L020**

Transparent power cable. L = 2000m Ø 0,75mmq  
Cable available with 3-5-7 poles related to the selected wiring configuration.  
Change the red ~~x~~ to the required number of poles.

COD. **KS02504E**

Electrified square canopy with 2 holes for the passage of the power supply and suspension cable, with connection terminal board. Painted in DRY WHITE color.